

RESEARCH  
EDUCATION  
HOPE



# Legacy

2020-2021

CELEBRATING **\$25 MILLION** RAISED  
FOR BREAST CANCER RESEARCH

*Stefanie Spielman*

FUND FOR BREAST CANCER RESEARCH



OSU COMPREHENSIVE CANCER CENTER  
JAMES CANCER HOSPITAL & SOLOVE  
RESEARCH INSTITUTE

***In this issue:***

**Spielman Fund Reaches  
\$25 Million**

PAGE  
**2**

**Community Partners Persevere  
Through a Challenging Year**

PAGE  
**16**





**OSUCCC – James and  
Stefanie Spielman Comprehensive  
Breast Center (SSCBC) Leadership**

Harold L. Paz, MD, MS  
Executive Vice President and  
Chancellor for Health Affairs,  
The Ohio State University  
and CEO, Wexner Medical Center

William B. Farrar, MD  
CEO, James Cancer Hospital  
and Solove Research Institute  
Medical Director of the SSCBC

Raphael E. Pollock, MD, PhD, FACS  
Director, The Ohio State University  
Comprehensive Cancer Center

**Medical Oncology**  
Bhuvana Ramaswamy, MD

**Radiation Oncology**  
Julia White, MD

**Breast Imaging**  
Jeff Hawley, MD

**Reconstructive Surgery**  
Roman Skoracki, MD

**Stefanie Spielman Fund  
for Breast Cancer Research**  
Co-Founder  
Chris Spielman

**OSUCCC – James  
Assistant Vice President of Development**  
Jennifer McDonald

**Editor**  
Allison Haas

**Contributors**  
Tracy DeCroce  
Steve Wartenberg

**Stefanie Spielman Fund  
for Breast Cancer Research**  
P.O. Box 183112  
Columbus, OH 43218-3112  
614-293-3752

# TABLE OF CONTENTS

**1**

A NOTE FROM CHRIS

**2**

SPIELMAN FUND RAISES \$25 MILLION

**8**

5TH ANNUAL STEP UP RECAP

**10**

MEET OUR 2020 CHAMPIONS

**14**

STEFANIE'S TEAM OF HOPE

**15**

HOPE'S BOUTIQUE: HELPING CANCER SURVIVORS  
LOOK AND FEEL THEIR BEST

**16**

COMMUNITY PARTNERS

## STAY CONNECTED

Join our social media community, where we share news  
about upcoming events, our great partners and the impact  
gifts are making on research and cancer patients.



Like us on Facebook  
**[facebook.com/SpielmanFund](https://facebook.com/SpielmanFund)**



Visit our website  
**[SpielmanFund.com](https://SpielmanFund.com)**

## The James



**THE OHIO STATE UNIVERSITY**  
COMPREHENSIVE CANCER CENTER

*Any reference in this publication to any person, or organization, or activities, products, or services related to such person or organization, do not constitute or imply the endorsement, recommendation, or favoring of The Ohio State University Comprehensive Cancer Center – Arthur G. James Cancer Hospital and Richard J. Solove Research Institute or any of its employees or representatives acting on its behalf.*





**2020 was a year none of us likely will soon forget. Throughout the uncertainty of the COVID-19 pandemic, the hardships and the changes, we remained focused on a promise we made to Stefanie to “Continue to fight. Continue to live.”—thanks to your incredible generosity. I have been blown away by your resiliency and determination to make a difference.**

When Stef and I created the Stefanie Spielman Fund for Breast Cancer Research, we established what we believed to be an ambitious goal of raising \$250,000. I am humbled to announce The Spielman Fund has officially surpassed \$25.5 million!

This incredible milestone is a tribute to Stef and proof that her legacy lives on. Eleven years after her passing, she is still changing lives. I often wonder what she would say in moments like this. Certainly, our family feels an overwhelming sense of peace knowing she is still with us.

As time progresses, so has breast cancer research and technology. This issue of *Legacy* will look back on the Spielman Fund’s 25 greatest accomplishments in recognition of this monumental announcement. We are so excited to reflect and highlight the advancements your dollars have helped make possible.

Our work does not stop at this milestone. There is more work to do to find a cure and to create a cancer-free world. I want to thank every one of you who has contributed to this cause. Stefanie lives on in each of you, and I believe she would be so proud of how far we have come.

Continue to Fight,

A handwritten signature in black ink, appearing to read 'Chris'.

**Chris Spielman**

Co-Founder, Stefanie Spielman Fund for Breast Cancer Research



**The James would not be what it is today without the Spielman Fund.**

Because of the Spielman family and the fund’s many donors and volunteers, we are able to make great strides in the diagnosis, treatment and prevention of breast cancer. The Spielman Fund is a gift to The James and our entire community.

**William B. Farrar, MD**

CEO, James Cancer Hospital and Solove Research Institute  
Medical Director of the SSCBC



\$25

MILLION

*Reflects*

SPIELMAN FUND  
GROWTH AND IMPACT



**The Stefanie Spielman Fund has reached a major fundraising milestone that spotlights its progression from grassroots origins to major community force. To Chris Spielman, raising \$25 million to end breast cancer reflects how Stefanie's legacy is inspiring the thousands of people working on the fund's behalf today.**

"I am proud the fund has been able to continue to grow even after Stefanie passed away," says Spielman. "I think people know the fund was created out of a love for others and Stef's service to others."

Stefanie Spielman graduated from The Ohio State University in 1989 with

"I know there's a reason God gave me breast cancer, and I'm supposed to do something with it," Stefanie said that year.

The fund might have lost momentum with Stefanie's passing on Nov. 19, 2009, 11 years after it began. Instead, it grew. In more ways than one.



*Stefanie and Chris, 2007*

because of her passion and commitment that we've been able to deliver on our promise to her to continue fighting this fight, and to continue raising money to fund life-saving breast cancer research."

This story pays homage to the Stefanie Spielman Fund by highlighting several areas where it has contributed to research, equipment and services to help end breast cancer.

### STEFANIE SPIELMAN COMPREHENSIVE BREAST CENTER CELEBRATES 10 YEARS

In 2011, two years after Stefanie Spielman's passing, Ohio State honored her legacy in the name of the Stefanie Spielman Comprehensive Breast Center (SSCBC). Ten years later, the four-story facility, highly visible off State Route 315, remains a beacon for women seeking exceptional care in their greatest time of need.

Integral to the Spielman Breast Center, the Spielman Fund provides ongoing financial support for state-of-the-art equipment and specialized breast cancer prevention, diagnosis and treatment services.

Despite its high-tech features, the SSCBC's atmosphere feels anything but clinical. The staff are caring and empathetic. Many are breast cancer survivors themselves who openly share their stories just as Stefanie did on her own journey.

In these ways, the SSCBC lives up to the vision imagined a decade ago when Stefanie's legacy was honored at the facility dedication, which was attended by Chris and the couple's four children. Then-Ohio State President E. Gordon Gee described Stefanie that day in words that capture how her spirit lives on.

"She touched those struggling with their diagnosis and treatments, helping to make their worlds more comfortable, more optimistic and more affirmative. She possessed an uncommon combination of bravery, grace and compassion that continues to resonate through her remarkable legacy."

**“Stefanie taught us so much about inspiring others and fighting for a cause greater than ourselves. It is *incredible* how deeply this has been embraced in communities all over and beyond Ohio.”**

**WILLIAM FARRAR, MD**

a journalism degree. At age 30, she discovered a lump during a self-examination that was diagnosed as cancer by doctors at The Ohio State University Comprehensive Cancer Center – James Cancer Hospital and Solove Research Institute (OSUCCC – James).

Rather than focus on the diagnosis, Stefanie, a mother of four, and her husband Chris, an NFL football star who had been an All-American linebacker during his days at Ohio State, set out to raise money for breast cancer research at the OSUCCC – James.

So began the Stefanie Spielman Fund in 1998, a cause Stefanie believed to be her life's mission.

Their first year they raised more than \$1 million, quadrupling their goal, and brought awareness to the need for breast exams and early detection.

Today, in addition to breast cancer research, the fund supports many other causes, including the purchase of equipment for the Stefanie Spielman Comprehensive Breast Cancer Center; a patient assistance program; an established Chair in Cancer Imaging; and one of the nation's largest tissue banks for research. Every dollar raised for the fund directly supports these causes.

Driving these efforts are thousands of devoted volunteers, corporate sponsors, foundations, individual donors and an array of community partners whose annual events contribute to the cause.

"Stefanie taught us so much about inspiring others and fighting for a cause greater than ourselves. It is incredible how deeply this has been embraced in communities all over and beyond Ohio," says William Farrar, MD, CEO, James Cancer Hospital and Solove Research Institute. "It is



# SERVICES & EQUIPMENT FOR PATIENT CARE

## Reaching Rural Communities

The James Mobile Mammography unit has been screening women for breast cancer since 1988. But with the support of the Spielman Fund, there is now a second mobile unit, and the service has a greater presence in rural areas, such as Appalachia. Creative partnerships with county health offices, local festivals and other events are reaching women who live in areas with very limited if any access to mammography, many of whom are receiving their first breast cancer screenings.



## Enhancing Supplemental Care

The Stefanie Spielman Fund for Patient Assistance provides funding for support of breast cancer patients, such as outpatient massage therapy. The fund sponsors portions of the annual Breast Cancer Survivorship Conference, the Ask the Experts: Living Well with Advanced Breast Cancer conference and a monthly breast cancer support group.

## Outfitting Satellite Locations

The Stefanie Spielman Comprehensive Breast Center opened new mammography locations over the past year in Westerville, Hilliard (Mill Run), Dublin and a larger facility in Grove City that includes oncology rehabilitation, a high risk breast clinic, a diagnostic breast clinic and follow-up clinics. The Spielman Fund purchased breast imaging equipment for several of these facilities.



The James Grove City

## Improving Screenings for All Women

The Spielman Fund purchased the first game-changing 3D-mammography technology, called tomosynthesis. Used for annual breast screening exams, tomosynthesis shows 1 millimeter slices of breast tissue, akin to a CAT scan. The benefits are two-fold: It improves tumor detection by an impressive 30% and concurrently improves the ability to determine when patients do not have a tumor, reducing return visits by more than 25%. This sophisticated technology now outfits The James' entire mammography network, including all outpatient centers and both mobile units.

## Detecting More Cancers

Automated Breast Ultrasound (ABUS) is an imaging modality for radiologists to perform screening in women with dense breast tissue. Used when the effectiveness of traditional mammography is limited, ABUS has been effective in detecting cancers that are well hidden. Demand for this service has been rapidly increasing at The James, creating a need for a second unit and location. With Spielman Fund support, the new James Mammography Westerville site is offering ABUS exams to a growing number of patients.

## Staying State-of-the-Art

In 2018 the Spielman Fund underwrote a major technology upgrade for the SSCBC's MultiModality Conference where physicians meet weekly to review patient cases. The upgrade included a state-of-the-art control system, a large monitor, highly sensitive microphones mounted in the ceiling, in-room acoustic panels and more.

## Helping to Relieve Lymphedema

Many breast cancer patients experience fluid retention in the limbs as a side effect of surgery or radiation treatment to the lymph nodes. Lymphedema, a condition that can affect any part of the body, usually results in heaviness and swelling of the upper extremity after treatment for breast cancer and can be a source of discomfort, decreased range of motion and diminished quality of life. Several innovative surgeries, some of which were pioneered by Ohio State's plastic surgery team, offer hope to patients by reducing the risk of developing lymphedema or improving symptoms of lymphedema if they arise.

Roman Skoracki, MD, is particularly excited about a prophylactic bypass procedure offered to patients who require an axillary lymph node dissection. This procedure has reduced the risk of developing lymphedema from 40% to approximately 4% in James patients at the time of the initial surgery. "This is made possible by the provision of specialized equipment that is not available in most facilities and includes a near infrared camera that allows us to visualize lymphatic channels that are smaller than 0.5 millimeters, or the size of a small mechanical pencil lead," Skoracki says. The Spielman Fund purchased a second camera to help meet rising demand for this procedure.



Lymphedema camera



## RESEARCH

# \$25 MILLION

stefanie spielman  
FUND FOR BREAST CANCER RESEARCH

The Spielman Fund supports breast cancer research in five areas at the OSUCCC – James. Here are examples of how funds are advancing work in these distinctive areas.

### Research Faculty

One of the world's most prominent and innovative researchers in diagnostic imaging and contrast media holds the Stefanie Spielman Chair in Cancer Imaging. **Michael Tweedle, PhD**, joined the OSUCCC – James as a professor of Radiology and director of the Imaging Agents Laboratory for the Wright Center for Innovation in Biomedical Imaging in 2009.



Michael Tweedle, PhD, Michael Caligiuri, MD, and Chris Spielman, 2009

### Translational Research

The Stefanie Spielman Breast Cancer Cohort and Tissue Bank is a significant vehicle for the Spielman Fund's investment in research that has applications to disease treatment and cures. Among the more than 20 studies in leading medical journals by Ohio State researchers who used tissue samples from this resource was a multi-team study that appeared in *Cancer Research* in 2020 exploring how certain growth factor signaling promotes breast cancer brain metastasis.

### Clinical Research

Support for innovative clinical trials improves patient lives through supportive-care research, outcome research and dietary intervention studies such as:

#### Liquid biopsy for patients with metastatic triple-negative breast cancer:

Drawing from plasma samples in the Spielman-funded metastatic cohort study, **Daniel Stover, MD**, has built on his earlier work using liquid biopsies to profile cancer genomes from blood and predict outcomes for patients with triple-negative breast cancer (TNBC). That study suggests that minimally invasive liquid biopsies could be used as a new predictive marker for metastatic TNBC. Although TNBC represents 10-15% of all breast cancer diagnoses, the disease is responsible for 35% of all breast cancer-related deaths. Exciting follow-on studies are underway at the OSUCCC – James benefiting from Spielman Fund support, Dr. Stover's leadership and his laboratory team.

#### Preventing chemotherapy-induced neuropathy:

A phase Ib study of the safety and mechanics of an agent called nilotinib in preventing chemotherapy-induced peripheral neuropathy in patients with breast cancer.

#### Laser intervention for vaginal dryness:

Novel laser therapy intervention for patients on antiestrogen therapies experiencing significant vaginal dryness.

### Equipment for Research and Patient Care

The Spielman Fund's purchase of the VisioPharm® artificial intelligence platform has significantly expanded digital pathology research. VisioPharm® is a powerful tool that utilizes deep learning artificial intelligence to solve complex image analysis problems. It has broad research application and is used across multiple OSUCCC – James research centers. Ohio State pathologists are validating its application for clinical use in assessing certain breast cancer biomarkers. The computer program improves patient care by making biomarker assessment more objective, precise and reproducible.

### Educational Fellowships

Ohio State's Breast Medical Oncology Fellowship program is one of only a few in the country that offer physicians specialized training in breast medical oncology. Six of the program's seven graduates have gone on to faculty positions in academic breast medical oncology programs dedicated to breast cancer research and patient care.

**Dionisia Quiroga, DO, PhD**, and **Jasmine Singh Sukumar, MD**, are the current trainees in this program.



## SPIELMAN TISSUE BANK BY THE NUMBERS:



70,000+

CLINICAL, PATHOLOGIC AND  
TREATMENT DATA POINTS COLLECTED



2,000+

WOMEN CONTRIBUTED  
CLINICAL INFORMATION



2,000+

BLOOD SAMPLES COLLECTED FOR  
LIQUID BIOPSY STUDIES



1,000+

BREAST TUMORS ENCOMPASSED  
IN MICROSCOPE SLIDES



500

BLOOD SAMPLES COLLECTED FROM

100

PATIENTS WITH METASTATIC  
BREAST CANCER



40

METASTATIC SITE BIOPSIES  
COLLECTED

## SPIELMAN TISSUE BANK

### Spielman Breast Cancer Cohort and Tissue Bank Generates Millions in Research Funding

The Stefanie Spielman Breast Cancer Cohort and Tissue Bank has helped generate millions of research dollars for Ohio State in the 14 years since the Stefanie Spielman Fund invested in Stefanie's dream to catalyze research to end breast cancer.

Using tissue samples collected by the Spielman Breast Cancer Cohort and Tissue Bank, Ohio State investigators have garnered more than \$10 million in federal and national research grants and published more than 20 studies in leading medical journals, according to a report compiled in 2021 by Spielman Breast Bank Medical Oncology Lead **Daniel Stover, MD**.

"It is an honor to be fulfilling Stefanie's dream for breast cancer research," Stover says. "I hope she would be proud to see how her idea has grown."

“ It is an honor to be fulfilling Stefanie's dream for breast cancer research. I hope she would be proud to see how her idea has grown. ”

**DANIEL STOVER, MD**

The tissue bank has acquired thousands of breast-cancer samples from women who received their treatment at Ohio State. Its repository of clinical data and blood and tissue samples makes the tissue bank one of the nation's largest and most comprehensive of its kind. Over the years, it has expanded its inventory beyond samples from recently diagnosed women to include samples from women with metastatic and advanced disease.

Additionally, the cohort of scientific and clinical researchers has contributed to multiple high-impact advances and publications in the breast cancer field, many of which are already improving patients' lives.

"As technologies and our understanding of breast cancer have advanced, we are primed to leverage the Spielman Fund's investment to make further discoveries," Stover says. "We are using the detailed clinical data in ongoing studies looking at features related to patient risk, treatment toxicity and rare subtypes of breast cancer."



**\$25  
MILLION**

*Stefanie Spielman*  
FUND FOR BREAST CANCER RESEARCH

## IMPROVING OUTCOMES

### Ohio State Physician Helped Develop Prone Radiation for Safer Treatment

**Julia White, MD**, director of Breast Radiation Oncology at the Stefanie Spielman Comprehensive Breast Center, literally turned radiation treatments upside-down with the development of prone radiation for breast cancer.

Prone radiation meant that White's patients could focus on their breast cancer treatment instead of worrying about how it might affect their heart or lungs.

Traditional radiation treatment is done with women lying on their backs and comes with a potential risk of damage to heart and lung tissue that the radiation beams can unintentionally skim as they treat the breast that lies on top of the chest.

Patients now had another option—a specially designed board that allows women to lie on their stomachs with their breast hanging through an opening

in the board. This position keeps the heart and lungs out of harm's way and enables the radiation to target the breasts.

The Spielman Fund provided the financial backing for White to work with a manufacturer to develop her prone radiation board commercially.

Now available nationwide, the board is effective for most women who are having a lumpectomy to preserve the breast, White says.

"It allows the breasts to fall away from the chest wall," she says. "Using our center's expertise in computer modeling for radiation treatment planning, we can distribute the radiation dose through the breast evenly and avoid over- and under-dosing. We can also stay in front of the ribs usually, so we don't even need to go into the thoracic cavity where the lungs and heart are located."

And there is another benefit. The accuracy of the beam results in better cosmetic outcomes in the prone versus back position. With traditional radiation therapy, about 60% to 70% of patients have a good cosmetic outcome. Those odds increase to 80% to 90% of women using the prone radiation board.





The Spielman family



## 2020 Virtual Walk/Run Raises Money for Breast Cancer Research Amid a Global Pandemic

Over 700 supporters participated virtually in the 5th Annual Step Up for Stefanie's Champions Walk/Run from June 6-July 5. The 4-mile and 1-mile walk/run celebrates champions in the lives of cancer survivors, and benefits the Stefanie Spielman Fund for Breast Cancer Research at the OSUCCC – James. All participants completed the walk/run in their own time, keeping local social distance measures in mind.

Participants raised over \$50,000 through peer-to-peer fundraising, reaching out to family, friends and their community.

We were encouraged by all of the ways in which participants were able to honor the champions in their own lives and carry on Stefanie's legacy.

700+

virtual participants  
and supporters

\$50,000+

raised









# The Champion Award

Stefanie Spielman established the Champion Award to recognize one of the most critical factors in surviving cancer: loving, unwavering support. In Stefanie's case, such support during her battle with breast cancer came from her husband, Chris. To show her gratitude, Stefanie gave Chris the very first Champion Award in 2000.

**The ones who steadfastly stand beside us, and inspire us to strength.  
The ones who will not retreat from fear, and inspire us to courage.  
The ones who sacrifice all for us, and inspire us to love.  
The ones who will not let go, and inspire us to hold on.  
These are *Stefanie's Champions*.**

## MEET OUR 2020 CHAMPIONS



### Teri Baum

NOMINATED BY HER FRIEND, TINA LEE

Tina Lee was diagnosed with breast cancer on Oct. 17, 2018. "I was shocked and terrified," she says.

Then, Teri Baum, her friend and fellow teacher at the Our Lady of Perpetual Help School, stepped in to help. "She told me, 'You are my priority—anything you need, I'm here for you,'" Tina says.

In recognition of her devotion to the friend she calls her sister, Teri Baum is one of four recipients of the 2020 Stefanie's Champions Award, which honors caregivers who give so much of themselves to others.

Teri was able to anticipate many of Tina's needs because of her own cancer journey. She was diagnosed with cervical cancer 17 years ago and was treated at the OSUCCC – James. "I was pregnant with my fifth child at the time," she says. "So, I could relate to Tina on that level of having children and a family. I get it; I was there."

Tina has two daughters, who were 13 and 11 at the time of her diagnosis.

"I told her, 'This is where I'm supposed to be,'" says Teri, who went into full organizational mode after Tina's diagnosis. Teri planned a meal train among friends

that continued for five months, and she took Tina to the Stefanie Spielman Comprehensive Breast Center for tests and treatments, while "[trying] to take my mind off all the serious stuff by trying to teach me to crochet," Tina says.

During her own cancer treatment, Teri learned that it's OK to ask for help—that friends and family want to pitch in. "We're similar," Teri says. "We do for others, and when you're in the position of being the receiver of help, it can be difficult. You don't want to ask."

Tina didn't have to ask for help, as Teri was there from the start.

Tina's chemotherapy treatments lasted for five months. Whenever she was at the Spielman Center for chemotherapy, the texts and photos would start pinging on her smartphone. "No one fights alone," says Teri, who took scores of photos of Tina's fellow teachers and her students. "I'd send her pictures every 15 minutes or half-hour to make the time go by for her. For her first [chemotherapy] treatment, everyone wore pink."

Tina celebrated a year of being cancer-free on May 6, 2020. Throughout the day,



the texts congratulating her and wishing her well poured in. "Teri struck again!" she says.

Being recognized as a Step Up for Stefanie's Champion is special for Teri. "When Tina called to tell me, I was blown away and told her, 'I met [Spielman],'" Teri says. "I was at a dinner many years ago and Stefanie was the speaker and she was awesome. She said, 'Who takes their children to Disney World after they're done with their cancer treatment?' I did and she did too. I felt this instant connection with her, and I got to talk with her after the dinner."



## Sam Gifford

NOMINATED BY HIS MOM, MARCY GIFFORD

When his mother was diagnosed with breast cancer in 2014, Sam Gifford took her by the hand and told her everything would be OK and that he'd be there for her.

"And he was," Marcy Gifford says.

Sam was 11 at the time and had just finished fifth grade. Nominated by Marcy, Sam is one of four recipients of the 2020 Stefanie's Champions Award that recognizes and honors cancer caregivers.

"The most remarkable thing about Sam is that, this is your mom, and the word 'breast' is not an easy thing for any boy, especially when you're 11," Marcy says. "He never hesitated to share our story, and he will tell anyone who will listen the good, the bad, the ugly, the scary parts, the hope and the funny parts. This allows other people to realize it's a journey."

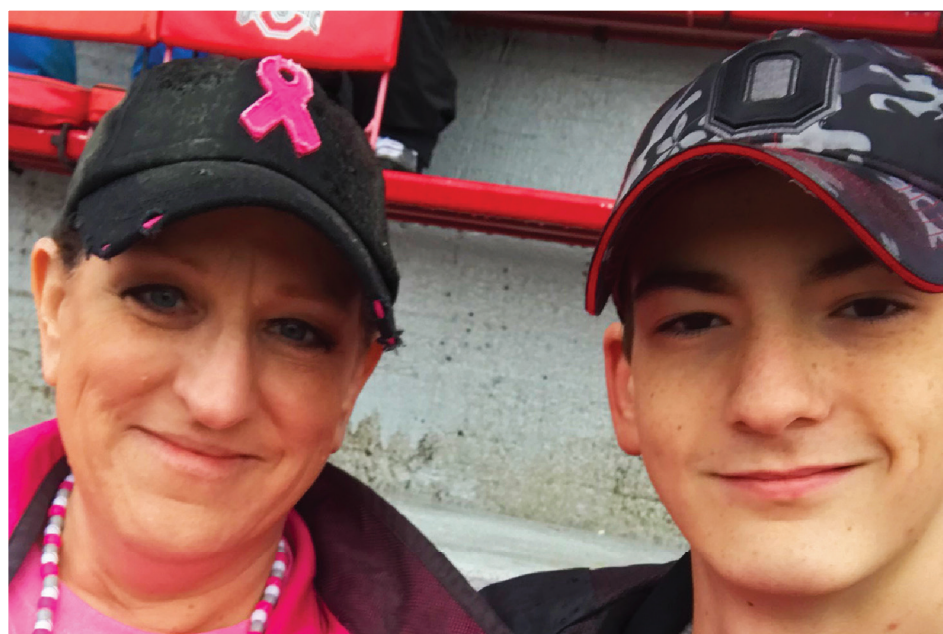
Marcy and Sam's cancer journey included matching shaved heads.

Sam had just learned that Marcy would soon begin her chemotherapy treatments at the Stefanie Spielman Comprehensive Breast Center, and that hair loss was inevitable. "We're so close and I couldn't sleep, thinking about it and worrying about it," Sam says. "She was downstairs—she was sleeping in a chair because it was too uncomfortable for her to lie down. I said, 'Mom, I'm going to shave my head with you.'"

Because he attends a Catholic school that doesn't allow shaved heads, Sam received permission from his principal and parish priest. "I told him he didn't have to do it—that I wouldn't have done it for him," Marcy jokes.

Sam insisted.

After Marcy's surgery, seven surgical drains were attached to her body, which made it hard for her to move around and



“**He's wise beyond his years, and he has a heart that few people have, and he doesn't hesitate to jump in where he's needed.**”

MARCY GIFFORD

shower. Sam noticed and “invented” a special drain chain for his mom that utilized cords and safety pins. “He devised it all on his own and surprised me with it,” Marcy says, adding that she slipped it around her neck, and it worked, making moving around a lot easier.

Perhaps Sam should patent his invention? “I’m thinking about it,” he jokes.

Sam says his mother's cancer journey made their close relationship even closer. “As a person, it made me a lot more willing to help anybody,” he says, adding that friends whose parents or grandparents are diagnosed with cancer come to him

and ask him what to do and how to help their loved ones. “What I tell them is that it's one of those things where you just have to watch, and anything you see that they need, don't ask, just do it. That cuts out the time that they have to struggle to a minimum so they can be as comfortable as possible during their fight.”

Marcy wasn't surprised by her son's caregiving heroics. “He's wise beyond his years, and he has a heart that few people have, and he doesn't hesitate to jump in where he's needed.”





## Carolyn Francis

NOMINATED BY HER SISTER, CARLA BAILEY

Carla Bailey was diagnosed with breast cancer and quickly scheduled for surgery in the spring of 2013. She was the mother of five children, and her husband, Jonathon, a colonel in the Army, was in Atlanta and about to be deployed to Iraq.

Those were difficult, stressful times for Carla and her family.

“My sister really stepped up and took on a big part of the burden,” Carla says of twin Carolyn Francis, one of four recipients of the 2020 Stefanie’s Champions Award that recognizes and honors caregivers, the often-unsung heroes of cancer journeys.

Carla and Carolyn are identical twins and have had a special bond since birth. They intuitively seem to know how their other half is feeling and what she needs. “You basically just have to do what has to be done,” says Carolyn, who runs her own business but put her work and personal life on hold for her sister. “I moved into her house and slept in the same bed with her. I was there the whole time to make sure she was taken care of. Carla has a special-needs daughter, and I made sure she was taken care of.”

Carolyn organized a meal train, scheduled family and friends to visit and help clean, provided some financial support and went with Carla to all of her medical appointments, including chemotherapy treatments. Whatever needed to be done, Carolyn made sure it was done.

“I think the hardest part for any caregiver is the feeling of helplessness,” Carolyn says. “You feel like you’re doing



everything you can, but you still feel like you could be doing even more. You can’t take your sister’s pain away, and it’s such a hard journey.”

Because they are identical twins, Carolyn was also concerned about the possibility that the sisters had an inherited genetic mutation that increased breast cancer risk, so Carla underwent genetic testing at the OSUCCC – James. “It was negative, which was a relief, and since we’re identical twins, that meant I was also negative,” Carolyn says. “Since we do have a family history, I get tested regularly and make sure our family members are aware and get tested.”

Carla and Carolyn say their faith was a large part of their shared cancer journey. “Our church is getting together for the virtual Step Up for Stefanie’s Champions run,” Carla says. “We’re such big supporters of the Stefanie Spielman Comprehensive Breast Center. There are other members of our church who have been treated there, and the run is so important for us.”

About five years after her initial diagnosis, Carla felt a lump in her armpit. “They found more cancer,” she says, adding that her breast cancer had metastasized and spread to her brain. She was treated at the Spielman Center again. “My frame of mind is I’m comforted in knowing that my doctors, who are now my friends, care a lot about me and are doing everything they can, and that my twin sister and my husband, who’s retired from the military, are here and doing everything with me.”

Being a caregiver has been an educational experience for Carolyn. “I learned how strong my sister is and all about the beautiful family of breast cancer survivors. We’ve met a lot of people through this journey—some of them still here and some of them not—and to see their strength has made me a champion for all survivors.”

“

**My frame of mind is I’m comforted in knowing that my doctors, who are now my friends, care a lot about me and are doing everything they can, and that my twin sister and my husband are here and doing everything with me.**”

**CARLA BAILEY**



## Andrew Adams

NOMINATED BY HIS SISTER, MARILYN JAYE SAUM

Marilyn Jaye Saum was 25, and her younger brother Andrew Adams was 14, when their mother was diagnosed with breast cancer. Less than a decade later, in 2010, their mother passed away. “She fought so hard, so courageously, with a beautiful spirit and smiled every step of the way,” Marilyn says.

Eight years after the loss of her mother, Marilyn was also diagnosed with breast cancer. She was shocked, but Andrew immediately leapt into “caregiver extraordinaire mode,” according to his older sister. In recognition of his compassion, love and commitment, Andrew is one of the four recipients of the 2020 Stefanie’s Champions Award that recognizes and honors caregivers, the often unsung heroes of cancer journeys.

“Seeing the effect it had on my mom, and not being able to do that much myself when my sister was diagnosed, I said, ‘Now I’m in a place and at an age where I can step up and help out,’” Andrew says. “Because of our bond, she knew I’d be there for her.”

Andrew—a professional actor with the Know Theatre in Cincinnati—went with his sister to every clinic appointment and

treatment session, and he was there during her surgery to remove the cancer and a subsequent reconstructive procedure. On a regular basis, he drove from his Cincinnati home to pick up Marilyn in Dayton and then on to Columbus and the Stefanie Spielman Comprehensive Breast Center for appointments and treatments. He also set up a room for his sister at his home, complete with sunflowers and color-coded notes that made it easy for Marilyn to know which medications to take and when to take them.

“He changed my bandages, my drainage bags, fed me and made sure I was hydrated,” Marilyn says. “He even helped me to the bathroom and in the shower.”

On the day before Marilyn’s surgery, Andrew drove her to Columbus, where he checked into a nearby hotel and went on a reconnaissance mission. “We went

to The James and did almost a trial run—where to park, where we go in and where to take her,” Andrew says. “It was so all the emotions and the early fog wouldn’t get in the way the next morning.”

There was never a doubt that Andrew would be there for Marilyn. “My sister and I have always had a close relationship,” he says.

Recently, Marilyn sent her brother a card, which read, “From the beginning, you were there doing whatever it took to keep me and the boys in a state of calm. With our mantra being, ‘We’ve got this,’ we were truly all in this together. I cannot thank you enough for putting your life on hold in order to help me get mine back on track. You have made me beyond proud, and you have made our mum in heaven beyond proud.”

“**You have made me beyond proud, and you have made our mum in heaven beyond proud.**”

**MARILYN JAYE SAUM, TO ANDREW ADAMS**

You can nominate your Champion today at [SpielmanFund.com](https://SpielmanFund.com).





## Stefanie's Team of Hope is First Community Peloton to Raise \$3 Million

In 2020, Stefanie's Team of Hope became the first community peloton in Pelotonia history to reach \$3 million in total funds raised for cancer research since the team's inaugural ride in 2010.

Founder of Stefanie's Team of Hope Shannon Peterson reflected on hitting this major milestone: "We have the most amazing and passionate team; they are committed to ending cancer. We couldn't have reached this milestone without the continued support of our donors, sponsors, volunteers, the Pelotonia staff, and the Spielman and Fitz families."

Stefanie's Team of Hope was founded in 2010 in honor of Stefanie Spielman and has been a part of Team Buckeye for the last three years. The team's mission is to celebrate Stefanie's life, further her legacy and raise awareness for the Stefanie Spielman Fund for Breast Cancer Research by participating in Pelotonia.

Founded in 2008, Pelotonia was established with the objective to fund innovative cancer research. Pelotonia is a three-day experience that includes a weekend of cycling, entertainment and volunteerism. Every participant-raised dollar goes to cancer research at The Ohio State University Comprehensive Cancer Center – James Cancer Hospital and Solove Research Institute.

If you'd like to learn more about participating in Pelotonia on Stefanie's Team of Hope, please contact Shannon Peterson, founder and captain, at [stefaniesteamofhope@gmail.com](mailto:stefaniesteamofhope@gmail.com) or [shannon.peterson@me.com](mailto:shannon.peterson@me.com).

“We have the most amazing and passionate team; they are committed to ending cancer. We couldn't have reached this milestone without the continued support of our donors, sponsors, volunteers, the Pelotonia staff, and the Spielman and Fitz families.”

SHANNON PETERSON



Stefanie's Team of Hope, pre-COVID



## Hope's Boutique



## Hope's Boutique: Helping Cancer Survivors Look and Feel Their Best

Located at the Stefanie Spielman Comprehensive Breast Center, Hope's Boutique offers a full range of products and services designed to restore the self-confidence of cancer survivors by helping them look and feel their best. The store offers custom wigs from the largest on-site wig inventory in central Ohio, breast prostheses and pocketed bras for all breast surgeries, along with an in-store fitter to ensure customers have a comfortable experience.

"[Hope's goal is to] help you feel good after your major surgery or after your cancer diagnosis and to help you get your life back," says Kathi Robbins, manager of Hope's Boutique.

The inspiration for Hope's Boutique came from Wendy Avner, a two-time breast cancer survivor, who thought of a "one-stop shop concept" for women experiencing their own breast cancer battle. And 23 years later, Hope's continues that mission, providing a comfortable atmosphere where women can select important products related to their cancer treatment, as well as for their personal needs.

In 2020, Hope's Boutique expanded to The James, and it recently began offering a selection of merchandise online.

When thinking about the impact of having a space like Hope's Boutique available to our cancer patients and survivors, Robbins likes to say, "The doctors will help save your life, and Hope's Boutique will help you live your life."

Learn more at [cancer.osu.edu/hopesboutique](https://cancer.osu.edu/hopesboutique).

Shop online at [hopes-boutique-osu.nbsstore.net](https://hopes-boutique-osu.nbsstore.net).





# thank you

## COMMUNITY PARTNERS

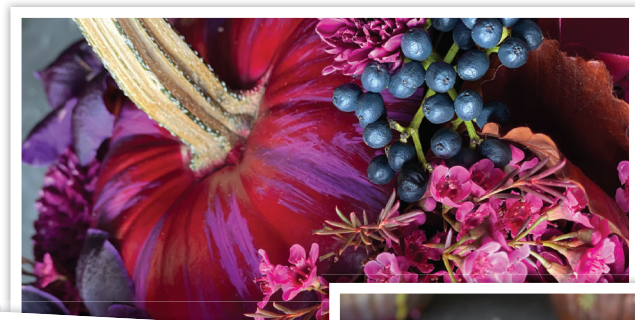
### BYERS SUBARU DUBLIN SHARE THE LOVE EVENT

In 2020, Byers Subaru Dublin once again chose the Stefanie Spielman Fund for Breast Cancer Research as its Hometown Charity during the Subaru Share the Love event. The Byers Subaru team and its customers raised \$56,650, bringing its cumulative total to more than \$450,000 for breast cancer research.

Byers Subaru Dublin General Manager Mark Laub reflects on the company's commitment: "I met Chris Spielman 19 years ago when he was doing some spokesperson work for us. I was so inspired when he shared Stefanie's story and how their family was using her cancer journey to support others and give back to their community through the Spielman Fund they created.

"From that point on, it really seemed like a perfect fit for Byers to get involved," Laub says. "The Spielmans were really my entry point to supporting philanthropy at The James, and I was fortunate to have Chris coaching me through it. Everyone on our team of 89 employees at Byers Subaru Dublin has been completely on board and proud of what we've been able to raise for our Hometown Charity each year."

The OSUCCC – James could not be more grateful for the incredible contribution Byers Subaru Dublin and the Share the Love program make toward helping us create a cancer-free world.



### FLOURISH PINK PUMPKIN PROMOTION

In October 2020, local florist shop FLOURISH bespoke created a stunning pink floral pumpkin arrangement and donated a portion of the sale proceeds to the Stefanie Spielman Fund.

"In the waning days of summer, I was filling some decorative pumpkins with seasonal flowers—a huge trend with European designers for the season—and playing around with some different color palettes. When I tried a combination of fuchsia and purple, I suddenly had the thought that pink floral pumpkins might be a good tie-in with Breast Cancer Awareness Month. I was fortunate to be on the team that designed many of the early Stefanie's Champions events, and I am glad to have been able to support The James and the Stefanie Spielman Fund in small ways through the years," says Bart Krogman, proprietor of FLOURISH bespoke.

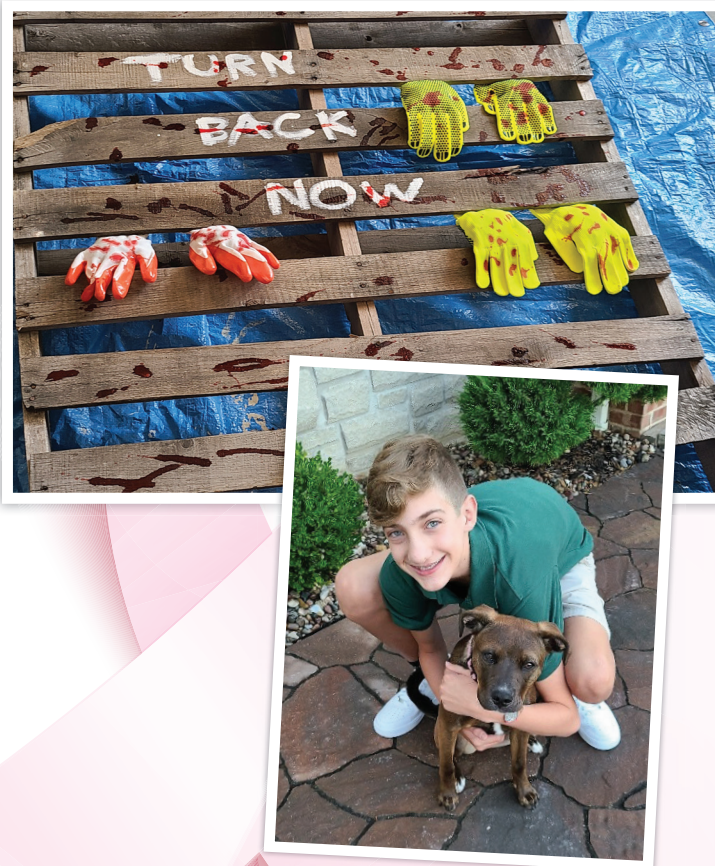
While this was the first year for this initiative, Krogman hopes it continues to bloom for years to come.



### CARTER'S TRAIL OF TERROR

During an October 2020 weekend, Carter Zelnis devoted his love for Halloween to a good cause. He planned, organized and ran a Haunted Trail in honor/memory of Amy Cox and donated proceeds to the Stefanie Spielman Fund because Amy, a close relative who battled breast cancer, loved the care she received at The James. Although it was his first time doing something like this, Zelnis considers it a success.

"Cancer has hit our family in many ways. I love taking my passion for Halloween and using it to help others in their battles. The Stefanie Spielman Fund helps so many with financial aid and cancer research. I pray for all those who have battled, those still fighting and that one day we find a cure," Zelnis says.



### LIFE'S SHORT, EAT DESSERT FIRST

Paula Brose, a 13-year breast cancer survivor and thriver, hosted her 13th annual "Life's Short, Eat Dessert First" event in 2020. Out of an abundance of love and concern for the safety of everyone, it was held virtually. The world may have slowed down, but cancer did not. Brose simply would not let COVID-19 stop her from raising money for breast cancer research.

The silver lining to holding the event virtually was that it allowed her to reach more people than ever before. While 2020 did not allow for the beautiful dessert buffet and in-person speakers, Brose found a way to raise money through an online silent auction and online donations.

No matter how difficult the past year was, friends, family and friends-of-friends opened their hearts and wallets to support the annual event benefiting the Stefanie Spielman Fund. In fact, the 13th annual "Life's Short, Eat Dessert First" event raised a record \$22,086! This brings the five-year total donation for the fund to over \$63,000. After a year like 2020, "Life's Short, Eat Dessert First" is a very fitting philosophy. For more information about the event, please contact Paula Brose at [paula.brose@aol.com](mailto:paula.brose@aol.com).



# Thank You Supporters!

## More than \$365,000 Raised by Our Community and Corporate Partners

During the 2020-2021 fiscal year, our Community and Corporate Partners raised more than \$365,000 for the Spielman Fund. Through dinners, golf outings, online auctions and many creative virtual endeavors, our partners are vital to the success of the Spielman Fund and are helping further our research and patient care.

For more information about how to become a partner, visit us online at [SpielmanFund.com](http://SpielmanFund.com) or call 614-293-3752.

### THE HONOR ROLL

Those partners with an asterisk are part of our Honor Roll. The Spielman Fund is honored that elementary, middle and high schools have chosen to direct their fundraising efforts to support us. Thank you for helping us create a cancer-free world!

Allen East Local Schools\*

Amoreena Pauley

Arlington Contact Lens Service Inc. –  
Pink Frames

Balanced Family Academy of Dublin

Bishop Fenwick School\*

Block “O” Play it Forward Flag Football

Bob Caldwell Automotive – Caldwell for  
the Cure

Bubbles & Blowouts for Breast Cancer

Buckeye Brown Backers

Buckeye Valley High School Cheer\*

Byers Subaru Dublin – “Share the Love”  
Event

Calvert Catholic Schools, Tiffin, OH Ace  
Out Breast Cancer Volleyball Game\*

Carter's Trail of Terror

Centerburg High School Football  
Touchdown Club\*

Centerra Co-Op – Fueling the Cure  
Initiative

Central Crossing Pink Out Game\*

Central Ohio Primary Care

Cheer Athletics Icon Bake Sale

Cheryl and Co.

Chix with Stix

Civista Bank – Casual for a Cause

Clean Cut Graphics LLC

Clip-N-Curl Beauty Salon

Collective Goods – Fall Book Fair

College Traditions, Inc.

Consolidated Cooperative

Coulter Ventures LLC

Cox Automotive Spielman Fundraiser

Curves for Women Spielman Fundraiser

Davison Orthodontics

Diversified Members Credit Union –  
Spielman Fundraiser

Dragonfly Vineyard and Wine Cellar

Driving for Cancer Research

FCCLA - Fairlawn Local Schools\*

FlightSafety International Spielman  
Fundraiser

FLOURISH bespoke – Pink Pumpkin  
Promotion







Franklin Heights High School 5K Race/  
Walk for Breast Cancer Research\*

Galena Park Independent School District\*

Grand Chapter of Ohio OES Charitable  
Foundation Inc.

Grove City High School Boys Soccer  
Pink Out Event\*

Groveport Moose Lodge #1245

Hadley's – On Wednesdays We Drink Pink

Hit 4 a Cure

Homestead at the Preserve Condo  
Association

Iron Pony Motorsports

James T. Hutta, DDS – Pink Smiles  
Campaign

Jendco Safety Supply – Jendco Gives  
Back

K & S Pub Charles Schwab Pool

Kent Brown Backers

Kroger

Lamar Advertising Breast Cancer  
Awareness Sponsorship

Life's Short, Eat Dessert First Event

Lifetime Pet Wellness Center – Paws for  
the Cause

Lincoln Social

Linkhorn Home Inspections

Logan Band Booster Association Spielman  
Fundraiser\*

LuLaRoe Fundraiser

Luper Neidenthal & Logan – Dress Down  
Fridays

Mad River Mountain – Pretty in Pink

Mark A. Miley DDS, Inc. – Spielman  
Fundraiser

Mathews Ford Marion, Inc. Sales Initiative

Miami Trace Education  
Association - Partner Care\*

Mid-America Conversion  
Services, LLC –  
Spielman Fundraiser

Midwest Sports Supply

Mitchell's Ocean Club –  
Pink Cake for Breast  
Cancer Awareness Month

Napoleon Area City  
Schools

Nationwide's Workplace Giving Program

New Albany Intermediate School\*

North Fork Local Schools\*

Northridge Athletic Boosters of Licking  
County Spielman Fundraiser\*

Notforgotten

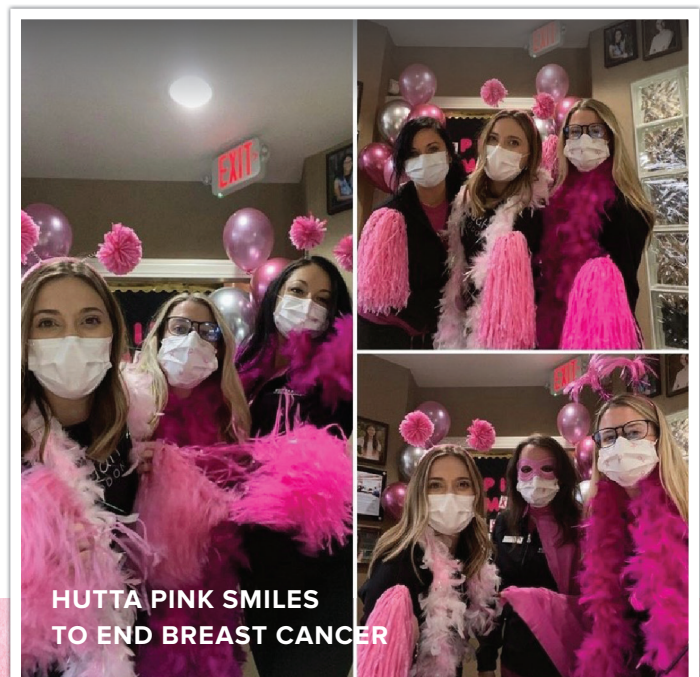
OCSEA Breast Cancer Awareness Month

Ohio Fair Managers Association

Ohio Foot and Ankle Inc.

Ohio Stingrays

Olentangy Athletic Boosters\*





Olentangy Braves Men's Soccer Program  
– Goals for a Cause\*

One More Time

Orthopedic Foot and Ankle Center

OSU 36

Par Tee Girls Golf Rally for Breast Cancer  
Research

Pickerington Central HS Club Hope Breast  
Cancer Awareness Game\*

Pink Out the Shoe

Piqua Jr. High School Spielman Fundraiser\*

Public School K141\*

Rapid Mortgage Company

Rivalry Run Everyday Heroes

Riverside Local Schools\*

Rocky Brand Boots – Durango Boots  
Against Breast Cancer

Rogue Fitness Limited Edition Products

Sigma Lambda Gamma National Sorority  
Inc.

Sigma Phi Gamma International Sorority  
Kappa Beta Chapter

Smiling Frog Yoga – Make Our Cup  
Runneth Over

South Central Power Company Spielman  
Fundraiser

Southern State Community College –  
MASO Pink Tea

South-Western City School District\*

Springfield City Schools Spielman  
Fundraiser\*

Star Jewelers on High

Stephen Gold Corporation Golf Outing

Strike for the Cure Tournament

Team Enso Cycling, Race Across America

The 574 Boutique

The Dublin Chamber of Commerce

This Little Farm Girls Market

Thr3es Above High Spielman Fundraiser

Threads Inc. - Club Thread

Turning Point Fitness

Upper Arlington Barrington Elementary –  
Buckeye Bonanza\*

Upper Arlington High School Bear Den –  
Pink Powder Toss\*

Wade Orthodontics

Washington Township Professional  
Firefighters Local 3369

Watkins Memorial Athletic Association\*

West Jeff Youth, Inc. "Go Pink"\*

West Side Dolphins Cheerleading – Pink  
Out Game\*

WKHS Girls Gymnastics Boosters\*

Worthington Dairy Queen

Worthington Dental Group – "Prevention is  
the Solution"

Wynford Pink Out

Zest Juice Co. Featured Smoothie



**For more information about how to become a partner, visit us online at [SpielmanFund.com](http://SpielmanFund.com) or call 614-293-3752.**



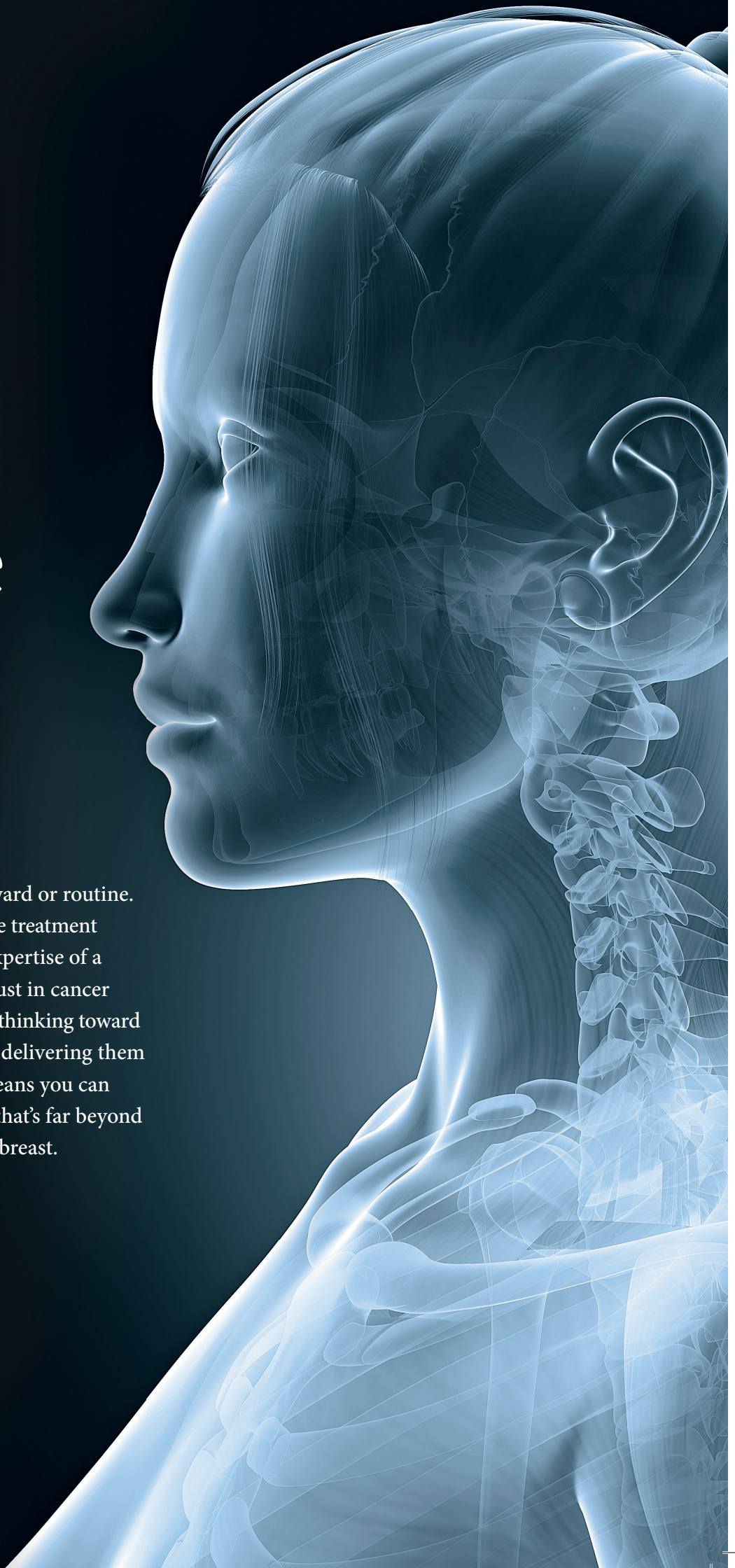
# There is no routine breast cancer.

Breast cancer is never logical or straightforward or routine. That's why fighting breast cancer with routine treatment just isn't enough. At The James, you get the expertise of a multidisciplinary team that specializes not just in cancer but breast cancer. They apply their collective thinking toward discovering the most effective therapies, and delivering them at exactly the right time, for you—which means you can count on comprehensive breast cancer care that's far beyond routine. To learn more, visit [cancer.osu.edu/breast](http://cancer.osu.edu/breast).

## The James



**THE OHIO STATE UNIVERSITY**  
WEXNER MEDICAL CENTER





# The James



**THE OHIO STATE UNIVERSITY**  
COMPREHENSIVE CANCER CENTER

OSUCCC – James Development  
660 Ackerman Road  
P.O. Box 183112  
Columbus, OH 43218

Non-Profit  
U.S. Postage  
**P A I D**  
Columbus, OH  
Permit No. 711

## Save the date and join us!



4-MILE OR 1-MILE WALK/RUN

### June 5-July 6, 2021

Join us for a virtual walk/run celebrating champions in the lives  
of cancer survivors!

Location: Wherever you are!

Register today by visiting [\*\*go.osu.edu/stepup\*\*](https://go.osu.edu/stepup)